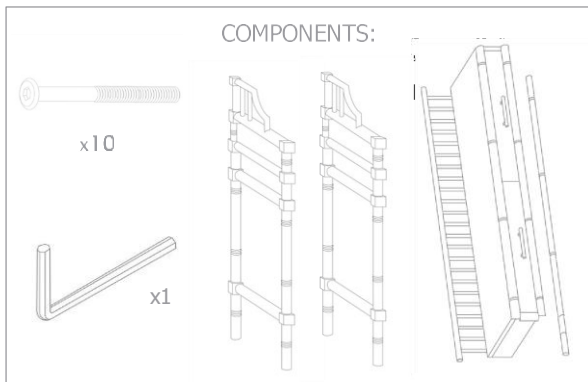


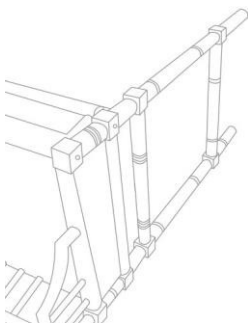
# OLIVER BONAS

## BAMBOO DESK AND DRESSING TABLE



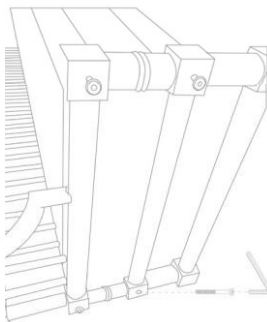
### INSTRUCTIONS

1



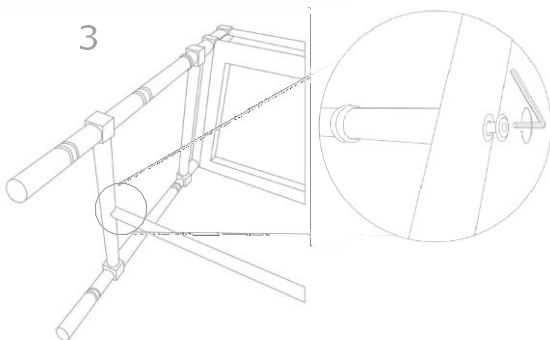
Carefully align sides to drawer unit.

2



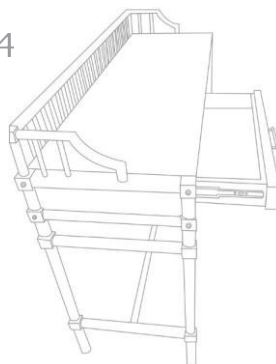
Insert screws and use allen key to tighten.

3



Once all screws are in place,  
tighten fittings until firm.

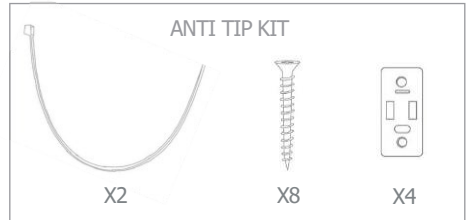
4



Periodically check fittings as they  
may come loose over time.

# OLIVER BONAS

## BAMBOO DESK AND DRESSING TABLE



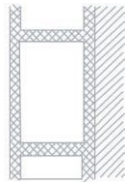
Please use the anti tip kit provided for safety. Please ensure the correct fittings are used for the chosen wall substrate:



WOOD

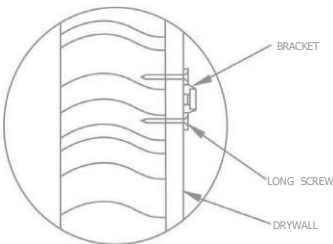


BRICK

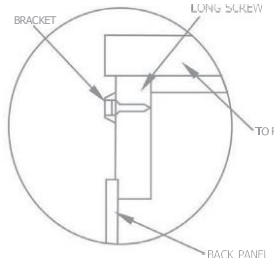


CAVITY  
(Special fittings needed)

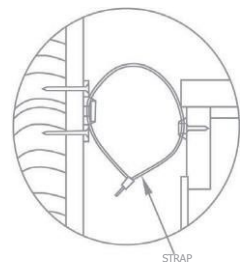
### ASSEMBLY



1. Mark the location of the hole on the wall using bracket approx 1" below the top of furniture. Predrill the holes at marked location & insert wall plug. Align bracket onto wall plug & secure using long screws.



2. Move the furniture to its final position against the wall and mark the location of the wall bracket on the back of the furniture. The bracket that attaches to the furniture must go into the solid wood piece at the top, not into the thinner back panel. Move the furniture away from the wall and place a bracket on the mark. Mark and drill holes for the screws using a 3/32 drill bit. Attach the bracket to the furniture using the short screws.



3. Move the furniture to its final position and align the bracket on the furniture with the bracket on the wall. Thread the strap through the bracket as shown, and tighten until snug. Do not over-tighten.

### IMPORTANT

Check that the wall bracket is firmly screwed into the stud, the furniture bracket is firmly attached to the frame, and the strap is snug.

# OLIVER BONAS

We hope you love your purchase, however if you aren't completely happy, please retain your packaging to ensure its safe return

## BAMBOU DESK AND DRESSING TABLE RANGE

Each Bambou piece has been lovingly made by skilled craftspeople

INDONESIA MAHOGANY WOOD & MDF

The framework is made from farmer mahogany  
The backing and base panels are made from MDF

Each piece has been handmade and hand sprayed. Due to this, variations in colour and finish may occur

### FEATURES

Each leg has been fitted with levellers, simply rotate to get the perfect level

### CARING FOR YOUR FURNITURE

To keep your new furniture happy, make sure you keep it dry  
Do not place it in front of a radiator or in sunlight and avoid direct heat.  
Similarly, do not place it outdoors or in any moist environments

Max weight Console top 25kg. Each drawer 3kg  
Ensure weight is evenly distributed  
Take care not to overload  
Drawers are assembled

Take care when moving your furniture, do not drag as this may weaken the joints and construction

Not suitable for children's rooms  
Domestic use only

Keep away from fire.

Be sure to use a coaster for your cup of tea

### CLEANING

Wipe with a damp cloth, followed by a soft dry cloth. Any spills should be wiped dry immediately to avoid discolouration and staining

Avoid abrasive cleaners

Retain this information for reference